

# Your NEWSLETTER

**SIFA**  
fireside

March 2024  
Issue 89

Your regular update on services, events and news

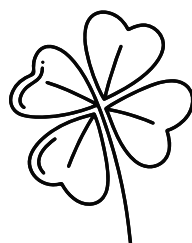
## A Hundred Thousand... Congratulations

There are lots of exciting changes in the works here at SIFA Fireside with a focus on developing new support services for our clients. Sarah, who is currently doing a brilliant job as our Mental Health Navigator, has been successfully appointed to the new role of Befriending Lead. Keep your eye out around the Support Centre for information about this essential new service and congratulations Sarah! Well deserved!



## Congrats... Part 2

We're also excited to announce that we are launching another new service which will focus on Housing and Substance Misuse support. The new team will be headed up by Danny in his new role as Service Manager and will include exempt accommodation as well as sustaining tenancies. Well done, Danny. More details soon.



## Dates for your Diary

March is a busy old month with St. Patrick's Day (17th), World Poetry Day (21st) and the start of British Summertime (25th).

## You'll have to Excuse Us

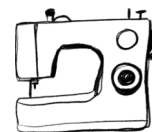
We just wanted to apologise for a couple of issues that are affecting the services on offer in the Support Centre at the moment.

We are currently down to one working washine machine and the door to one of our showers is also out of action. We are looking into getting these fixed as quickly as we can but we would like to thank you for your patience while we get our services back on track.

## Sew on and Sew Forth

Whether you need your clothes and bag repairing or if you just fancy taking up a new hobby or a new craft, our Sewing Classes are now up and running for you.

Open to anyone who wants to get involved, classes run from 10:30 until 12.30pm on selected Fridays. Dates overleaf.



## SIFA Fireside Support Centre

Emergency Support and Rough Sleepers: Mon-Fri, 9am onwards

Appointments: 10:30am - 12 noon

Workshops: 12:30pm onwards (excl. Wednesdays)



[www.sifafireside.co.uk](http://www.sifafireside.co.uk)  
0121 766 1700  
Mon - Fri, 9am - 4pm

BCC Emergency Accommodation  
0121 3032296

# Support Centre Timetable

Liverpool Street, Deritend, B9 4DS

# SIFA fireside

The Support Centre for any adult in  
Birmingham that faces homelessness



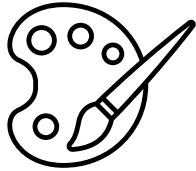
Talk Therapy  
w/ Monika  
9am - 12 noon

## Monday

Get Your Week Ready  
Book your 1-1 session  
with Bethany



Basic English & IT Skills  
Mon 10:30-12:30 Activity Room  
Wed 10:30-12:30 IT Suite



Art Class  
Activity Room  
13:30 - 15:00

## Tuesday

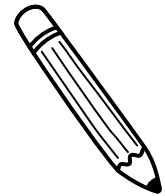


Music Therapy  
Wellbeing Room  
13:00

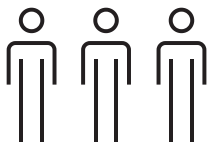


What class or activity do  
you want to see here?

## Thursday

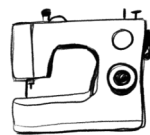


Let one of our team know what  
skills you would like to develop  
or use our suggestion box.



Men's Group  
Wellbeing Room  
13:00 - 14:00  
March 29

## Friday



Sewing Class 10:30 - 12:30pm  
15.03, 19.04, 17.05, 21.06



Alcoholics Anonymous  
Activity Room  
13:00 - 14:00

Birmingham,  
You're not alone.